



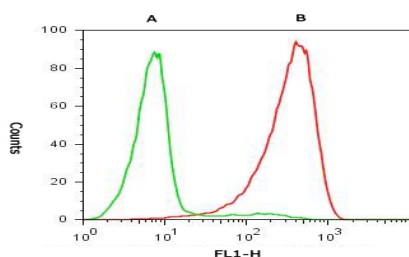
## Data Sheet **Anti-Human-Class I**

Catalogue	Label	Application	Quantity
MA001	Purified	FAC, ELISA	0.1mg
MA001.1	Biotin	FAC, ELISA	0.1mg
MA001.2	FITC	FACS	50 test
MA001.3	R-PE	FACS	50 test

**Isotype:** Mouse IgG2a  
**Specificity:** Human HLA-A,B,C  
**Clone:** EPm1  
**Buffer Solution:** PBS pH 7.2, 1 mg/ml BSA, 0.09% NaN<sub>3</sub>.  
**Storage Conditions:** Store at 4°C. Avoid repeated freeze/thaw cycles.

### Applications Tested

Purified anti-HLA-A,B,C has been tested by flow cytometric analysis of human peripheral blood leukocytes. This can be used at 1 µg per 100 µl blood (or per 1 million cells in 100 µl total staining volume). Biotin, FITC or R-PE conjugated anti-HLA-A,B,C can be used at the volume indicated on the tube label for per 100 µl blood (or per 1 million cells in 100 µl total staining volume). It is recommended that the antibody be carefully titrated for optimal performance in the assay of interest.



*Staining of normal human peripheral blood cells with 0.125 µg of purified mouse control IgG (A) or purified anti-human HLA-A,B,C (W6/32) (B) followed by FITC anti-mouse IgG (cat. SA001.2). Cells in the lymphocyte gate were used for analysis.*

Cat	Description	Label
SA001	Anti-Mouse Ig	Purified / Biotin / FITC / R-PE / HRP
SA002	Anti-Rabbit Ig	Purified / Biotin / FITC / R-PE / HRP
SA003	Anti-Goat Ig	Purified / Biotin / FITC / R-PE / HRP
PD011	Streptavidin	Purified / R-PE / HRP

For research purposes only. Not for therapeutic or diagnostic use.

[www.epigenbiotec.com](http://www.epigenbiotec.com)

Tel:010-64807408, 013910899152

epigen.info@gmail.com

Printed on 1 Sept 08



**EPIGEN**  
biotech  
北京表源生物技术有限公司