



Data Sheet **Anti Human HLA-A2**

Catalog Number : MA002 Purified-anti-HLA-A2
 MA002.1 Biotin-anti- HLA-A2
 MA002.2 FITC-anti- HLA-A2
 MA002.3 R-PE-anti-HLA-A2

Isotype: Mouse IgG2b

Specificity: Human HLA-A2, HLA -Aw69

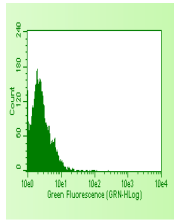
Clone: EPm2

Buffer Solution: PBS pH 7.2, 1 mg/ml BSA, 0.09% NaN₃.

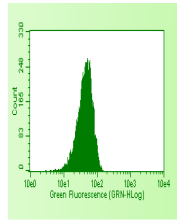
Storage Conditions: Store at 4°C. Avoid repeated freeze/thaw cycles.

Applications Tested

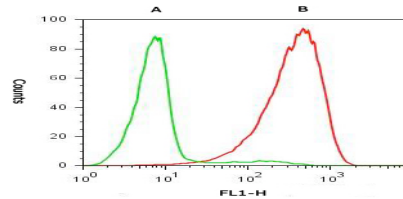
Purified anti-HLA-A2 has been tested by flow cytometric analysis of human peripheral blood leukocytes. This can be used at 1 µg per 100 µl blood (or per 1 million cells in 100 µl total staining volume). It is recommended that the antibody be carefully titrated for optimal performance in the assay of interest.



negative control



Anti-HLA-A2



Staining of normal human peripheral blood cells with 1 µg of biotin-mouse control Ig (left) or Biotin-anti-human HLA-A2 (Right) followed by Avidin- anti-mouse IgG.

Staining of normal human peripheral blood cells with 1 µg of purified mouse control Ig (A) or purified anti-human HLA-A2 (B) followed by FITC anti-mouse IgG (cat. SA001.2). Cells in the lymphocyte gate were used for analysis.

Related Products

| Cat | Description | Label |
|-------|----------------|---------------------------------------|
| SA001 | Anti-Mouse Ig | Purified / Biotin / FITC / R-PE / HRP |
| SA002 | Anti-Rabbit Ig | Purified / Biotin / FITC/ R-PE / HRP |
| SA003 | Anti-Goat Ig | Purified / Biotin / FITC/ R-PE / HRP |
| PD011 | Streptavidin | Purified / R-PE / HRP |

For research purposes only. Not for therapeutic or diagnostic use.

www.epigenbiotec.com

Tel:010-64807408, 013910899152

epigen.info@gmail.com

Printed on 14 Sep 08