



**Data Sheet**

**Anti-Human-CD3**

**Catalog Number :** MA006 Purified-anti-human CD3  
 MA006.1 Biotin-anti-human CD3  
 MA006.2 FITC-anti-human CD3  
 MA006.3 R-PE-anti-human CD3

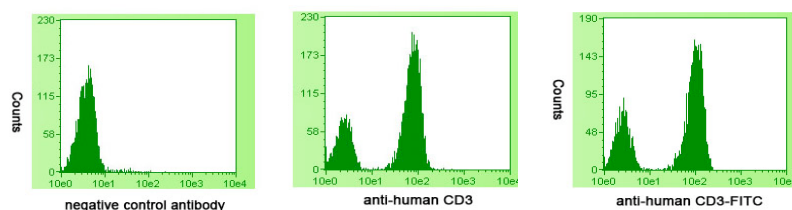
**Isotype:** Mouse IgG2a

**Specificity:** Human CD3 chain

**Buffer Solution:** PBS pH 7.2, 1 mg/ml BSA, 0.09% NaN<sub>3</sub>.

**Storage Conditions:** Store at 4°C. Avoid repeated freeze/thaw cycles.

**Applications Tested** Purified, biotin and FITC conjugated anti-human-CD3 have been tested by flow cytometric analysis of human peripheral blood leukocytes. Purified-anti-CD3 can be used at 1 µg, both biotin-anti-CD3 and FITC-anti-CD3 can be used at 1µl per 100 µl of blood (or per 1 million cells in 100 µl total staining volume). It is recommended that the antibody be carefully titrated for optimal performance in the assay of interest.



*Staining of normal human peripheral blood cells with 1 µg of purified mouse control Ig (left) or purified anti-human CD3 (middle) followed by FITC anti-mouse IgG (cat. SA001.2). Staining of cells directly with 1µl of FITC-anti-CD3 (right). Cells in the lymphocyte gate were used for analysis.*

**Related Products**

Cat	Description	Label
SA001	Anti-Mouse Ig	Purified / Biotin / FITC / R-PE / HRP
SA002	Anti-Rabbit Ig	Purified / Biotin / FITC/ R-PE / HRP
SA003	Anti-Goat Ig	Purified / Biotin / FITC/ R-PE / HRP
PD011	Streptavidin	Purified / R-PE / HRP

For research purposes only. Not for therapeutic or diagnostic use.

[www.epigenbiotec.com](http://www.epigenbiotec.com)

Tel:010-64807408, 013910899152

epigen.info@gmail.com

Printed on 1 Sep 08